



# SAFAL EMS

ISO Base

## Safal Infosoft (P) Limited

2, 4<sup>th</sup> Floor, Arohi Arcade,  
Bopal, Ahmedabad - 380058

Gujarat - INDIA

[www.safalerp.com](http://www.safalerp.com)



# Modules of SAFAL EMS

**Admission**

**Administration**

**Fees Management**

**Library Management**

**HR Management**

**Finance Management**

**Exam & Result Management**

**Alumni Management**

**Hostel Management**

**Analytical Reports Generation**

# SAFAL Education Management System

**Higher Education  
Portal**

**Self Service, Reporting, Data Analysis**

**Student  
Services**

**Constituent  
Relationship  
Management**

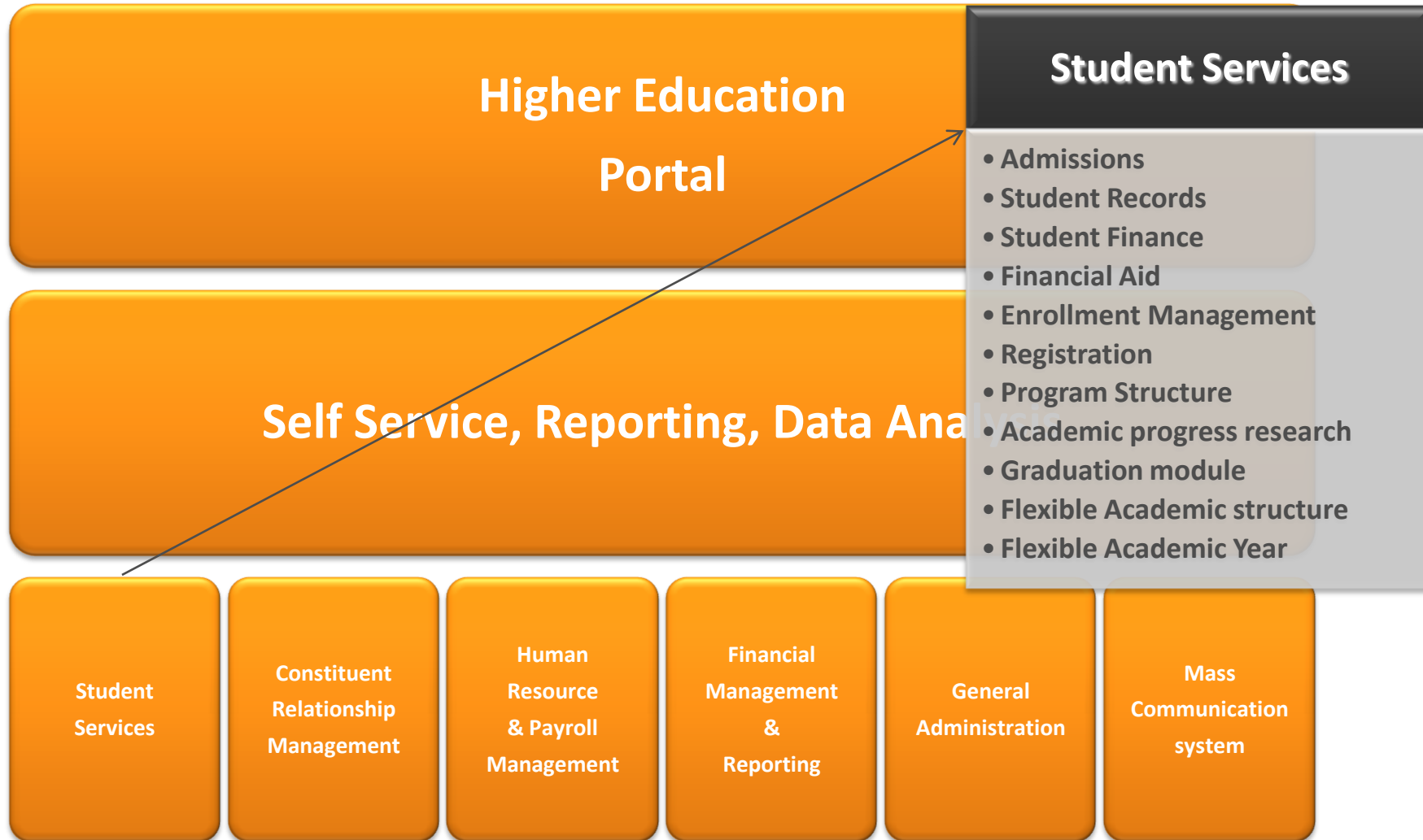
**Human  
Resource  
& Payroll  
Management**

**Financial  
Management  
&  
Reporting**

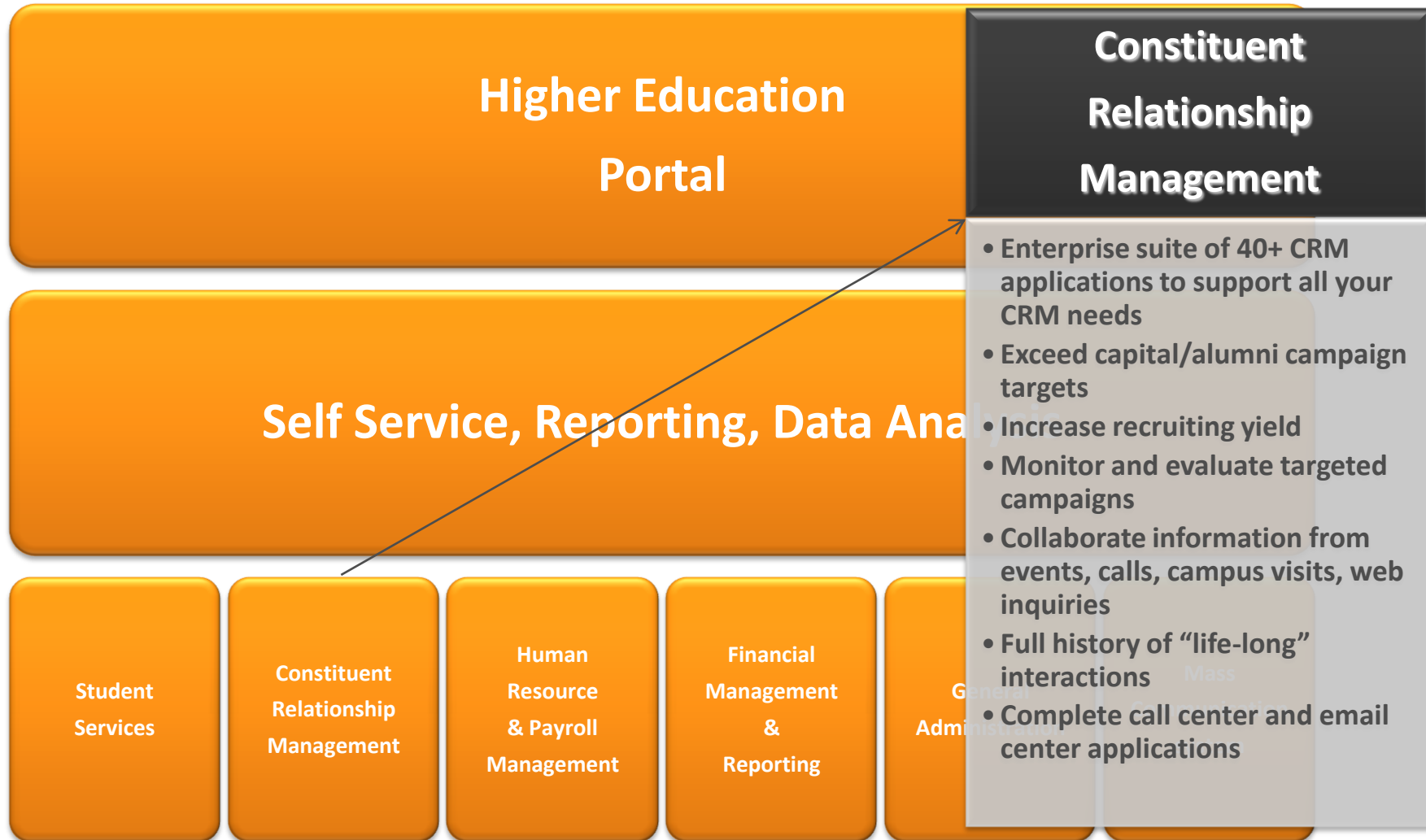
**General  
Administration**

**Mass  
Communication  
system**

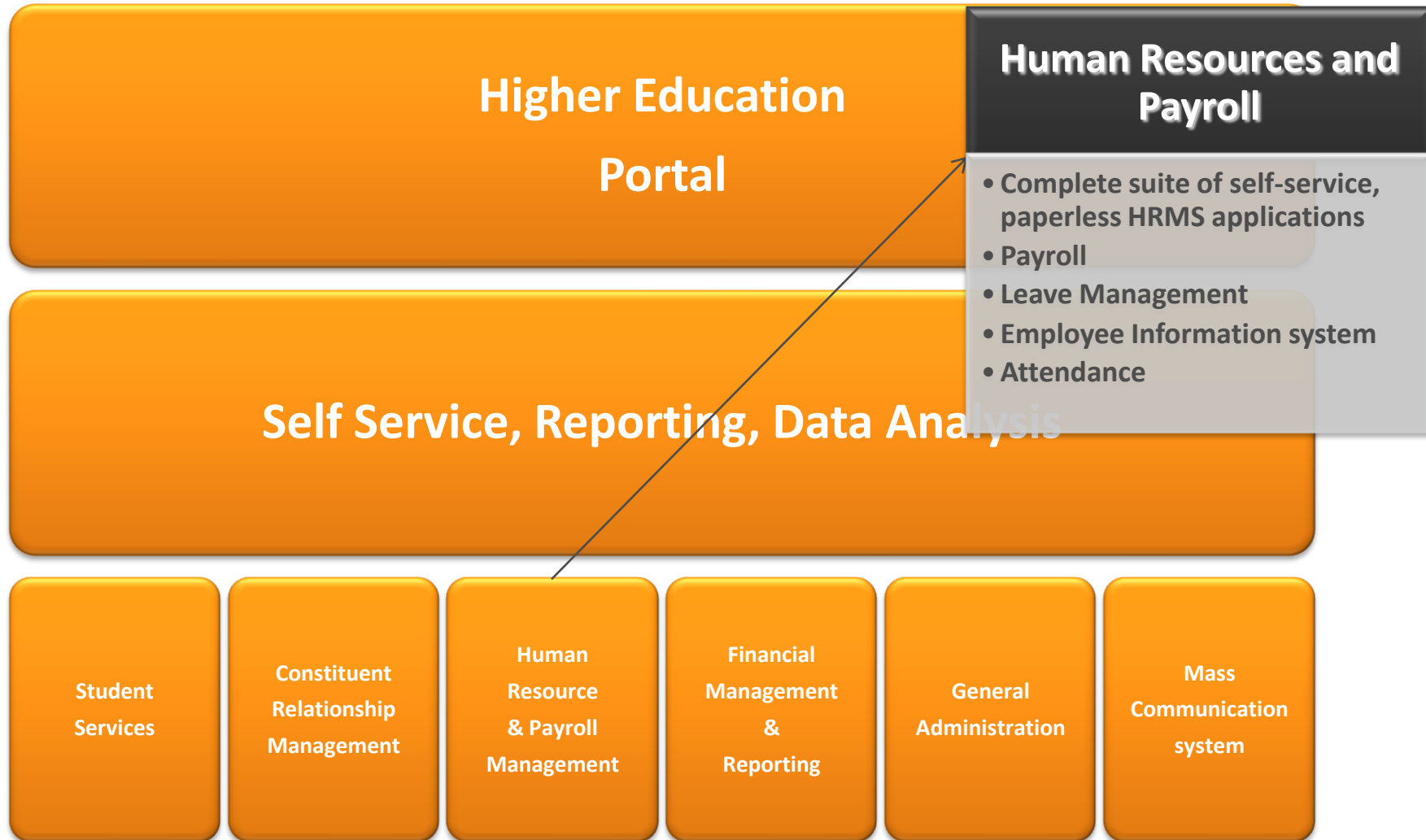
# SAFAL Education Management System



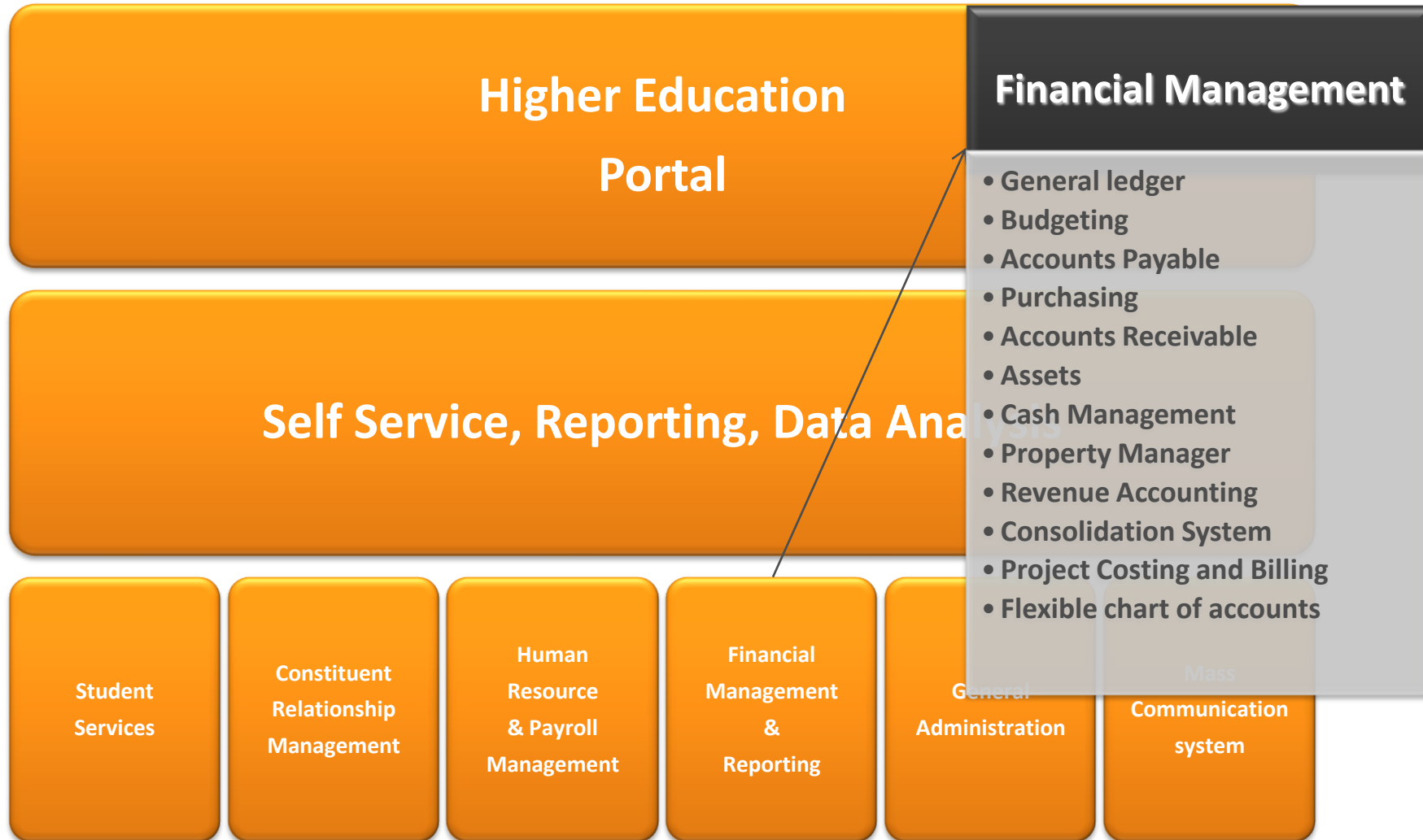
# SAFAL Education Management System



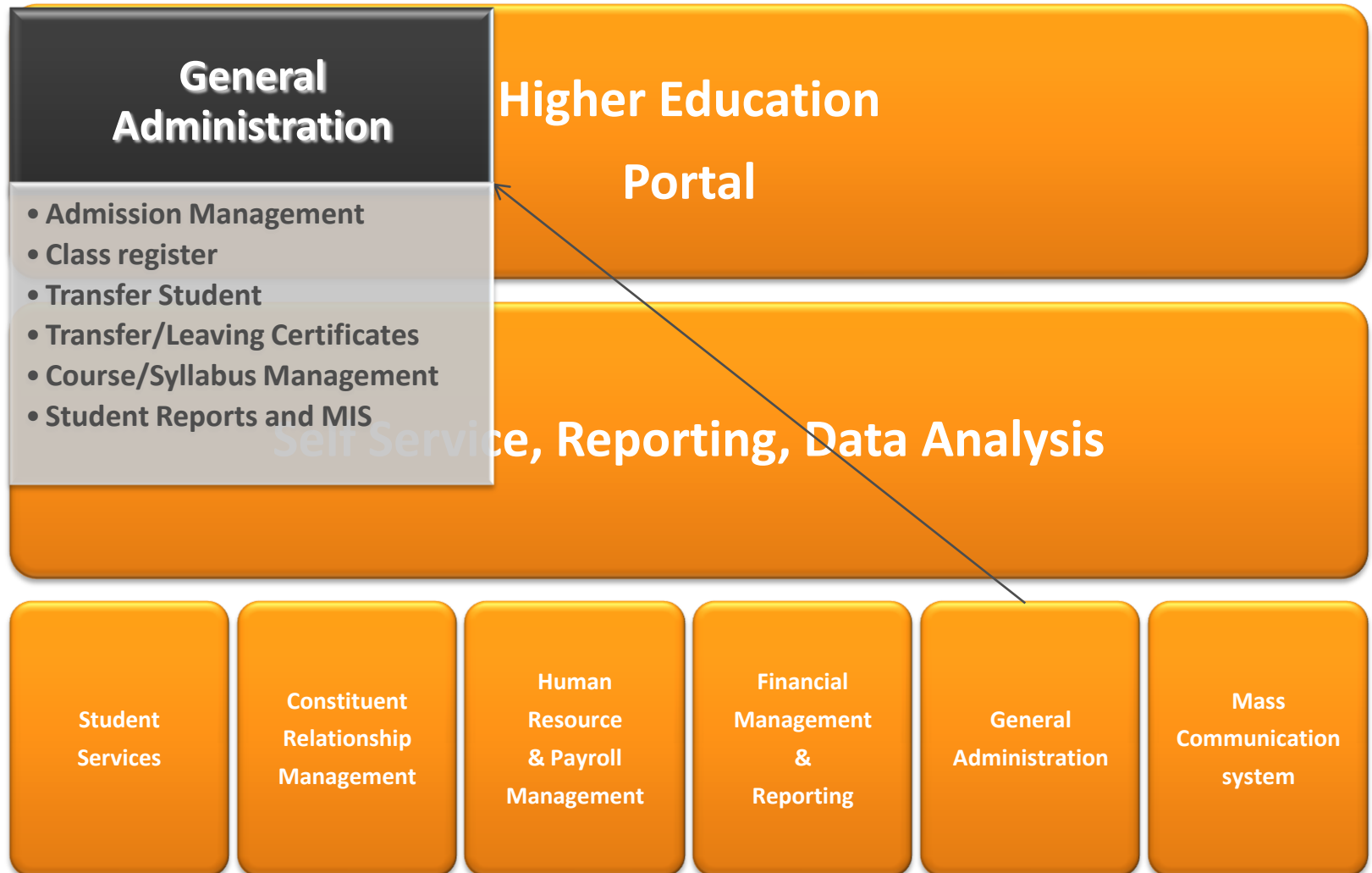
# SAFAL Education Management System



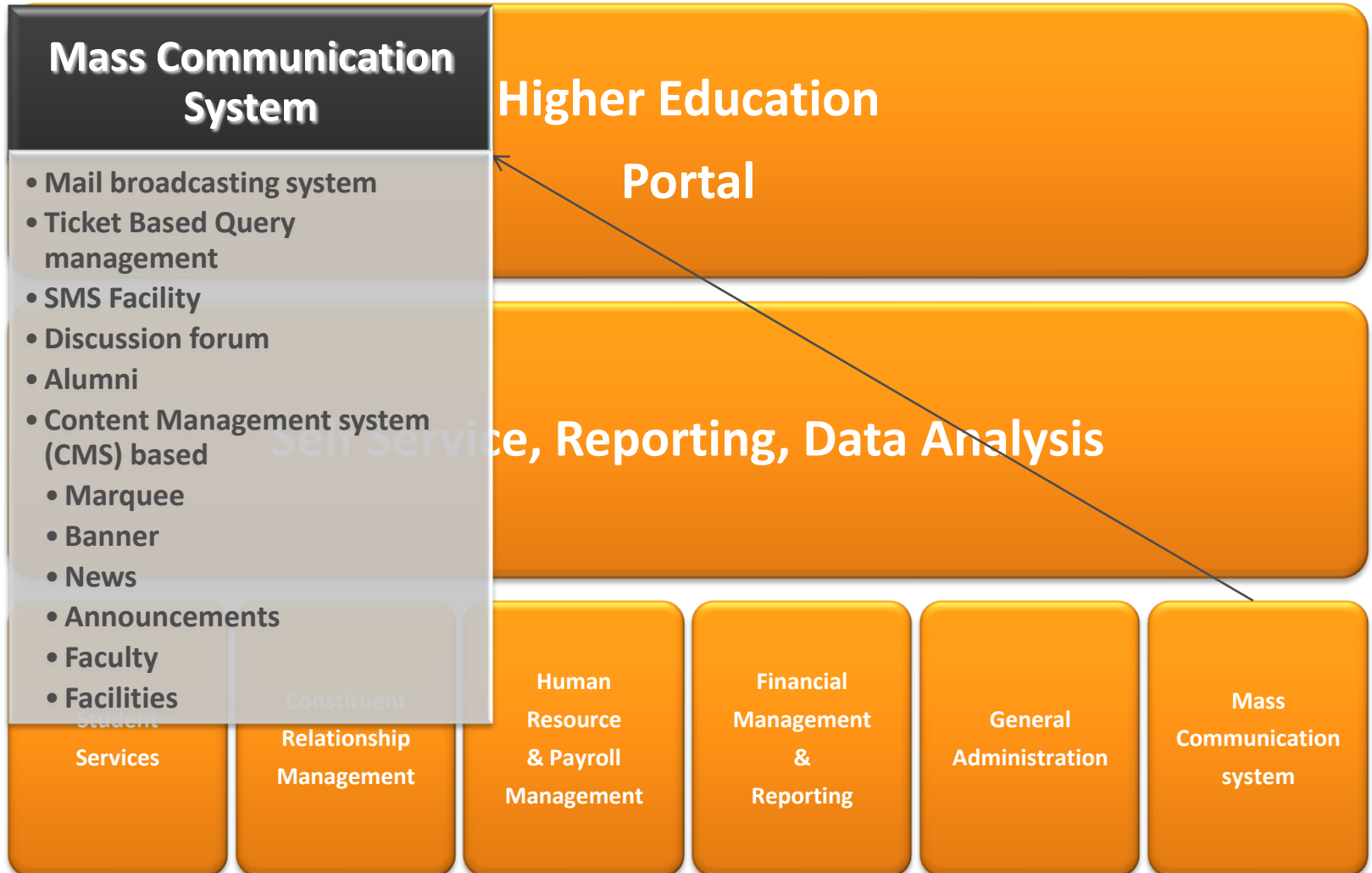
# SAFAL Education Management System



# SAFAL Education Management System



# SAFAL Education Management System



# SAFAL Education Management System

## Self Service & Analysis

- Student Self Services
- Employee Self-Service
- Financial Analyzer
- Student Analyzer
- Performance Analyzer
- Fees Analyzer

## Higher Education Portal

## Self Service, Reporting, Data Analysis

Student  
Services

Constituent  
Relationship  
Management

Human  
Resource  
& Payroll  
Management

Financial  
Management  
&  
Reporting

General  
Administration

Mass  
Communication  
system

# SAFAL Education Management System

## Portal

- Enterprise-wide portal development capability
- Educational ERP
- User-level personalization fully customizable
- Single sign-on
- Complete student portal
- Enterprise scheduling
- Link to external web sites and information sources
- Dynamic Information Portal

## Higher Education Portal

## Self Service, Reporting, Data Analysis

Student  
Services

Constituent  
Relationship  
Management

Human  
Resource  
& Payroll  
Management

Financial  
Management  
&  
Reporting

General  
Administration

Mass  
Communication  
system

# General Administration

This module helps the Institute to capture and maintain students' information and related activities. This module also maintains status of students throughout his academic tenure with the Institute. This module is the single point access to all the information related to students.

- **Maintain office information like**

- GR Number
- Admission date
- Active status
- Transfer certificate number and date etc

- **Maintain student personal information**

- Name
- Permanent and Local Address
- Parent and Guardian information
- Category
- Student document detail etc.

- **Maintain Class Registers**

- **Print Leaving and Transfer Certificates.**

- **Print student Identity cards**

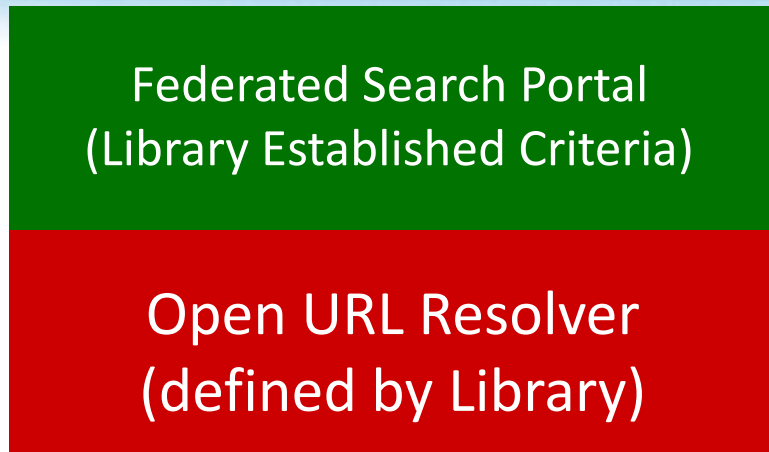
# Admission

- **This module helps the Institute to facilitate SPOT ADMISSIONS. Defining the parameters can validate student admissions. Facility to print Identity cards and Fee Receipts instantaneously on the basis of General Registration (GR) number allocated to students by system after successful completion of admission process.**
- **Define Admission parameters like Percentage, Subjects, Age, Student Category, Gender v/s Student Quota and Venue per class per year**
- **Manage Admissions**
- **Allocate unique GR Number**
- **Generate MIS based on the above parameters**

# Library Systems

- In library systems firstly student enter with a smart card which is operate by a magnetic strip or RF strip.
- In this systems student can search all types of eBooks & books through the internet & download or issued which he want.
- If any student enter without smart card then in library alarm will ring & student would not get any type of books.

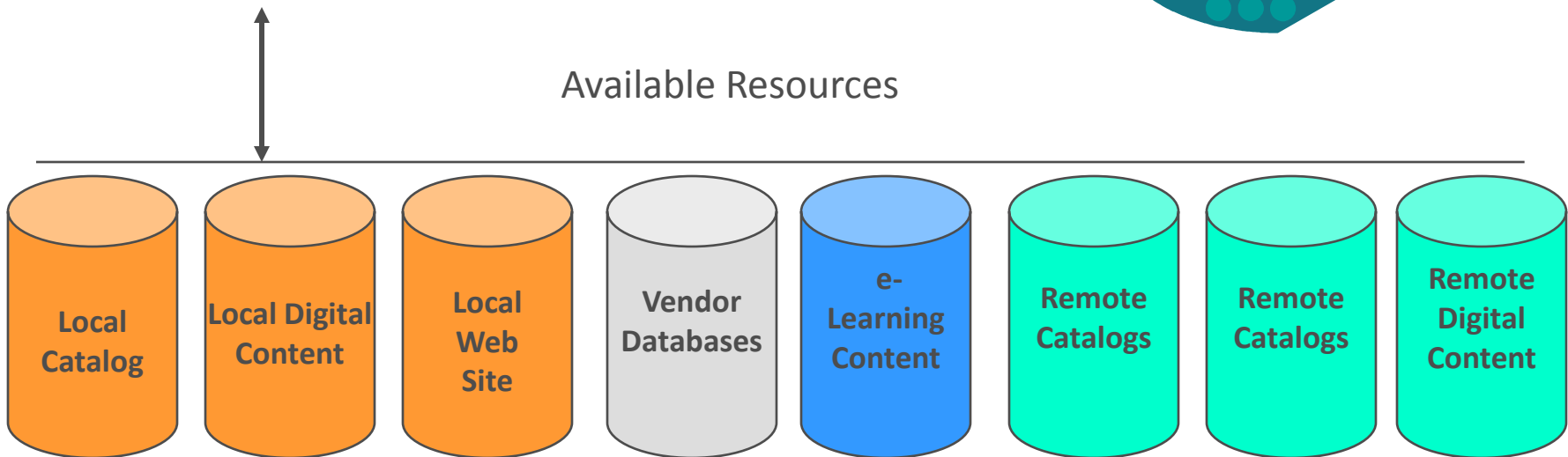
# Library Systems (continued)



Authentication



Available Resources



# Exam & Result Processing

- This module facilitates the users to define schedules and structures of examination, subject group, etc. It helps to define evaluation criteria like Marks, Grades, Attributes etc. Users has the facility to create rules based on which the results can be processed and declared.
- Custom Design multiple Result Cards with user defined calculation methods.
- Support for different evaluation types like marks, grades, attributes and descriptions.
- Define optional subjects and Subject Selection rules
- Define Absentee, passing grading and rules.
- Enter exam attendance and marks.
- View and Print results in variety of formats

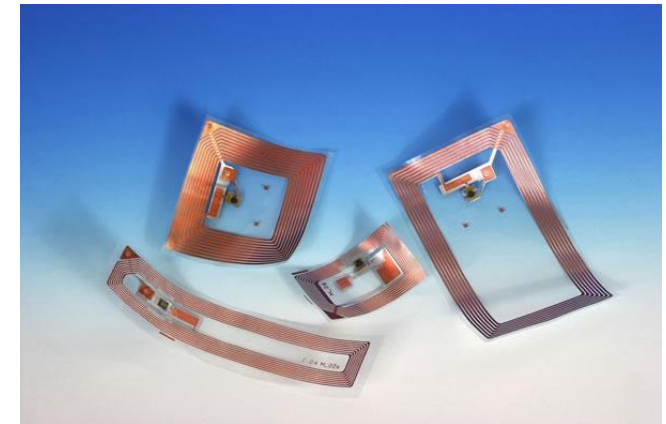
# Fees

- **This is an exhaustive fee module integratable with internal accounting system. This is dynamic module where the user can define various fee categories, templates of fees based on student category/gender. Fees type like Yearly, Half Yearly, Quarterly, refundable/non-refundable. This module has the facility to create user defined late fee templates.**
- **Create customized fee plans for different student categories.**
- **Receive fees, print receipts and refund deposits.**
- **Automated updating of entries in the financial accounting system if integrated.**
- **Extensive reporting on fees received and receivable.**
- **User defined late fee calculation mechanism.**

# RFID Tag

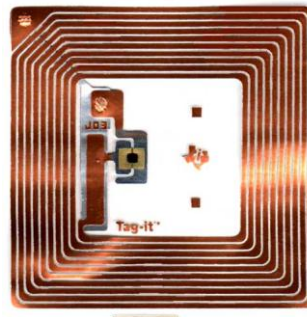
## Successor to Bar Codes

- ⑩ Can read even covered
- ⑩ Can read while moving
- ⑩ Can scan at distance
- ⑩ Price dropping to low levels
- ⑩ Remain in product for life



## Current Applications

- ⑩ Toll pass systems
- ⑩ Pet identification
- ⑩ Access cards
- ⑩ Retail theft protection



## Potential Applications

- ⑩ Locate common objects
- ⑩ Improved asset control
- ⑩ Real-time retail-shelf inventory
- ⑩ Move to faster or self-checkout
- ⑩ After-sale services offerings

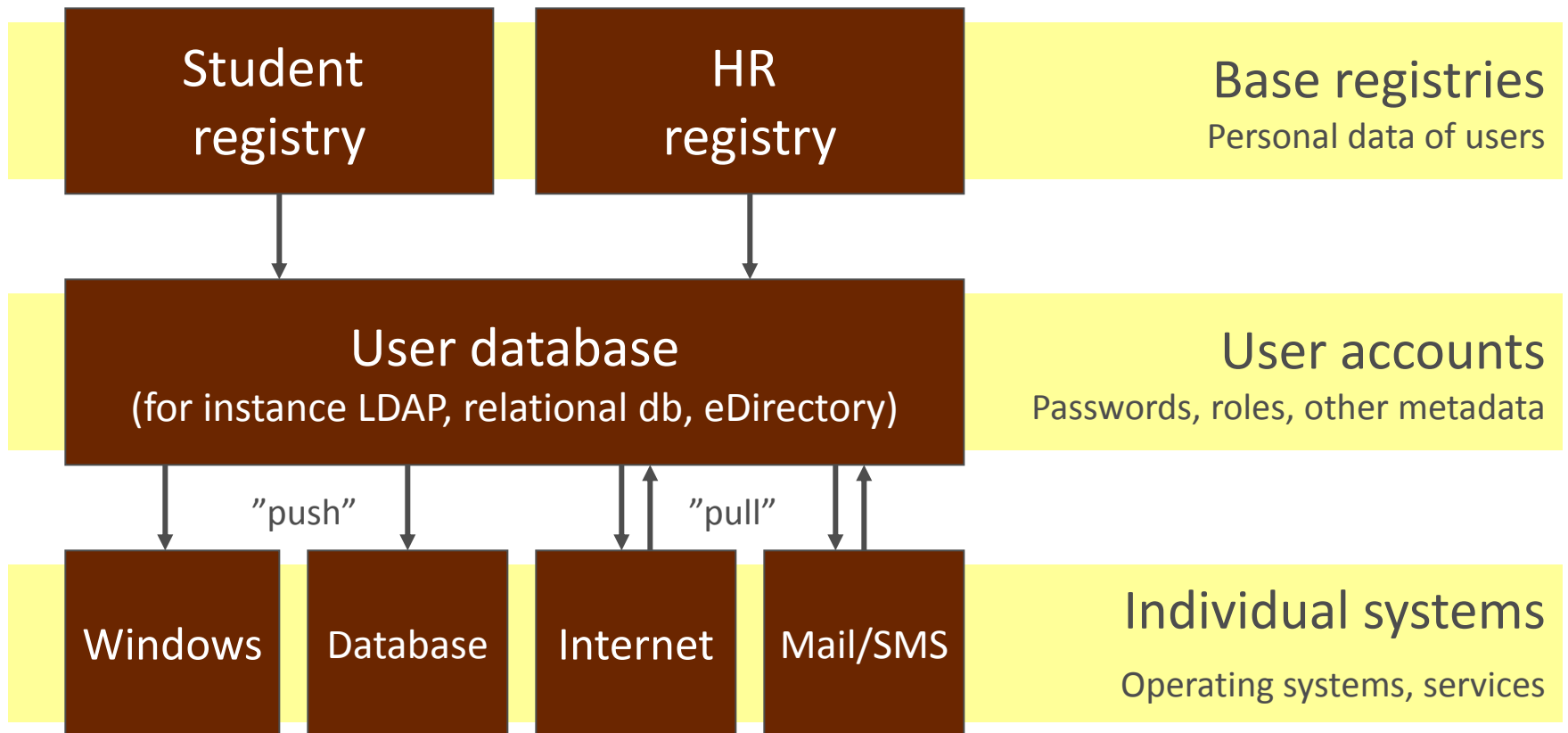
# Student Self Service

- ⑩ Student Profile
- ⑩ Enrollment and fees
- ⑩ Fees Detail
- ⑩ Pay Online
- ⑩ Enrollment
- ⑩ Course and syllabus detail
- ⑩ Curriculum detail
- ⑩ Exam Schedules
- ⑩ Result
- ⑩ Participate in Discussion forum
- ⑩ Ticket based Query system
- ⑩ Question Papers
- ⑩ Forms and eBooks download
- ⑩ My Inbox

# Benefits

- **Eliminate work duplication by making information seamlessly available to every department.**
- **Reduce Paper work, improve work efficiency, accountability and save time.**
- **Relieve Academic Staff from administrative workload.**
- **Reduce Result Processing and Publishing Time.**
- **Examine the academic performance of Students/Faculties/Classes easily**
- **Get a complete picture of your financials by integrating financial transactions across all the departments.**
- **Improve greater Transparency within the School in administrative activities**
- **Exhaustive MIS Reports**

# Centralized User Administration



# User Roles and Facilities

- **Teaching staff**
  - Recording tutorial attendance and work done
  - Generating reports
- **Administrative staff**
  - Monitor attendance across modules
  - Generate warning letters
- **Students**
  - Get information on staff, modules and tutorials
  - Bulletins, dates, times, staff office hours, email addresses
  - Join discussion Forums

# IT Infrastructure

- **Varies institution by institution**
- **central maintenance**
  - IT department maintains all the IT systems in the university
- **distributed maintenance**
  - IT department maintains some centralised services (e.g. Windows/Unix environments for students...)
  - institutes maintain their own services (e.g. Learning management systems, Windows environment for staff...)

# Thank You

## **Safal Infosoft (P) Limited**

2, 4<sup>th</sup> Floor, Arohi Arcade,  
Bopal, Ahmedabad - 380058

Gujarat - INDIA

[www.safalerp.com](http://www.safalerp.com)

Ahmedabad - Mumbai - Delhi NCR - Rajkot - Nanded - Vijayawada - KENYA